



DEWAN PERNIAGAAN DAN PERINDUSTRIAN CINA
KUALA LUMPUR DAN SELANGOR

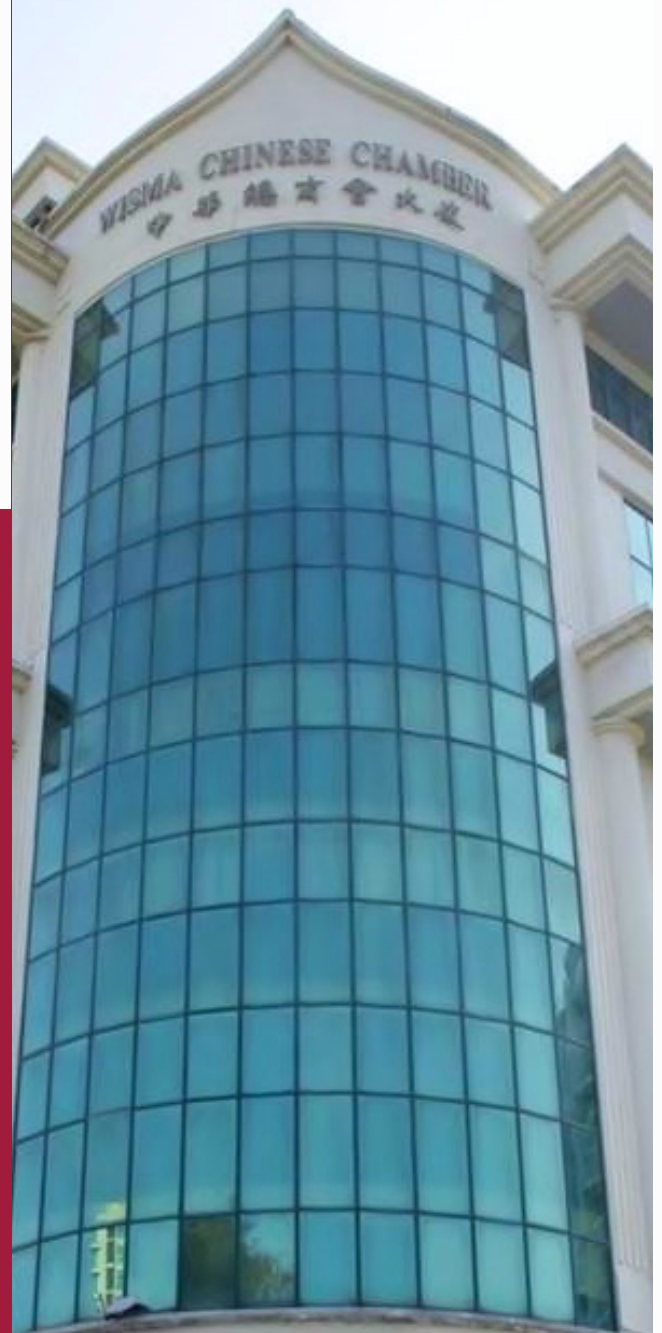
吉隆坡暨雪兰莪中华总商会（隆雪中总）

THE CHINESE CHAMBER OF COMMERCE &
INDUSTRY OF KUALA LUMPUR & SELANGOR (KLSCCCI)

关于商会 ABOUT US

吉隆坡暨雪兰莪中华总商会，简称“隆雪中总”，是吉隆坡及雪兰莪地区华商的最高领导机构，也是马来西亚最活跃的商会之一。由於吉隆坡是马来西亚的政治与经济中心，本会的各项活动深受各界的重视。

The Chinese Chamber of Commerce and Industry of Kuala Lumpur and Selangor (KLSCCCI) is the foremost institution representing the Chinese business community in Kuala Lumpur and Selangor regions. It is also one of the most active Chambers of Commerce in Malaysia. The various activities of the Chamber have attracted the attention of the Government as well as of the private sector by virtue of the fact that the Chamber is strategically located in Kuala Lumpur which is the centre of Malaysian politics and economics.



Facebook:



Website:



会员

本会会员性质共分四种：

1. 商团会员
2. 公司/商号会员
3. 个人会员
4. 附属会员

截至2018年8月8日，会员人数共2458名。其中商团会员80名，个人会员193名，公司/商号会员2045名，附属会员140名。每个商团都有其本身的会员，这些会员也自然成为本会的间接会员，如果把间接会员也计算在内，则本会的会员总数超过3万名。



MEMBERSHIP

The membership of the Chamber comprises the following categories:

1. Trade Association
2. Firm / Company
3. Individual
4. Associate Member

Its total direct membership as at 8 August 2018 is 2458 members, currently there are 80 trade association members, 193 individual members, 2045 firm / company members and 140 associate members. Each and every trade association has its own membership and their members are indirect members of the Chamber which if takes into account well exceeding 30,000 in number.



会员优惠与福利

MEMBERSHIP PRIVILEGES & BENEFITS

成为会员的惠益 BENEFITS OF A MEMBER

1. 获取最新的工商资讯
Access to the latest information about commerce & industry
2. 即时获得有关政府计划及政策的资料
Obtain information on Government plans & policies
3. 可参与各类洽谈会和商展
Opportunities to attend trade & investment conferences & exhibitions
4. 为会员发出推荐信，以申请中国多次入境签证及 APEC 卡
Issue recommendation letter for members to apply for multiple entry visa from Embassy of China & APEC card
5. 以优惠价参加本会活动
Participate in activities organised by KLSCCCI at preferential rate
6. 以优惠价租用本会礼堂和研讨室
Rent the hall and seminar room of KLSCCCI at preferential rate
7. 赠阅本会出版之「商讯」
Free copies of Berita KLSCCCI
8. 国油公司汽油优惠配套
PETRONAS Petrol and Diesel Price Rebate for Members of KLSCCCI
9. 马来西亚宝马提供拥车回扣优惠
BMW Group Malaysia Corporate Fleet Discount for Members of KLSCCCI
10. 隆雪中总与精英大学助学金项目
KLSCCCI - HELP University Scholarships grants & bursaries

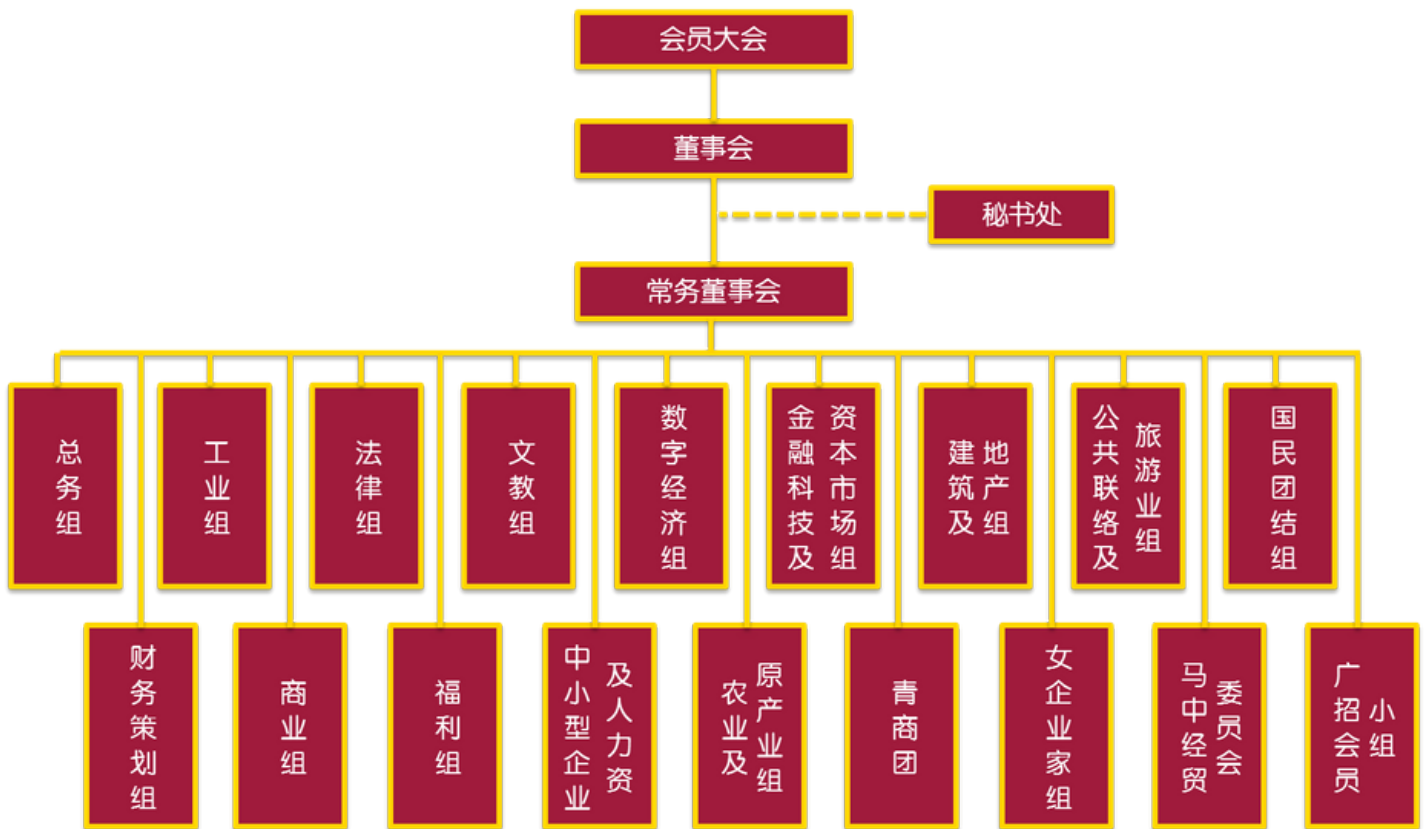


会员大会是本会的最高权力机构，会员大会闭会期间，依章程规定选出45名董事（10名商团董事、35名个人或公司/商号董事）组成董事会，董事会必要时可另委任不超过4名董事加入。

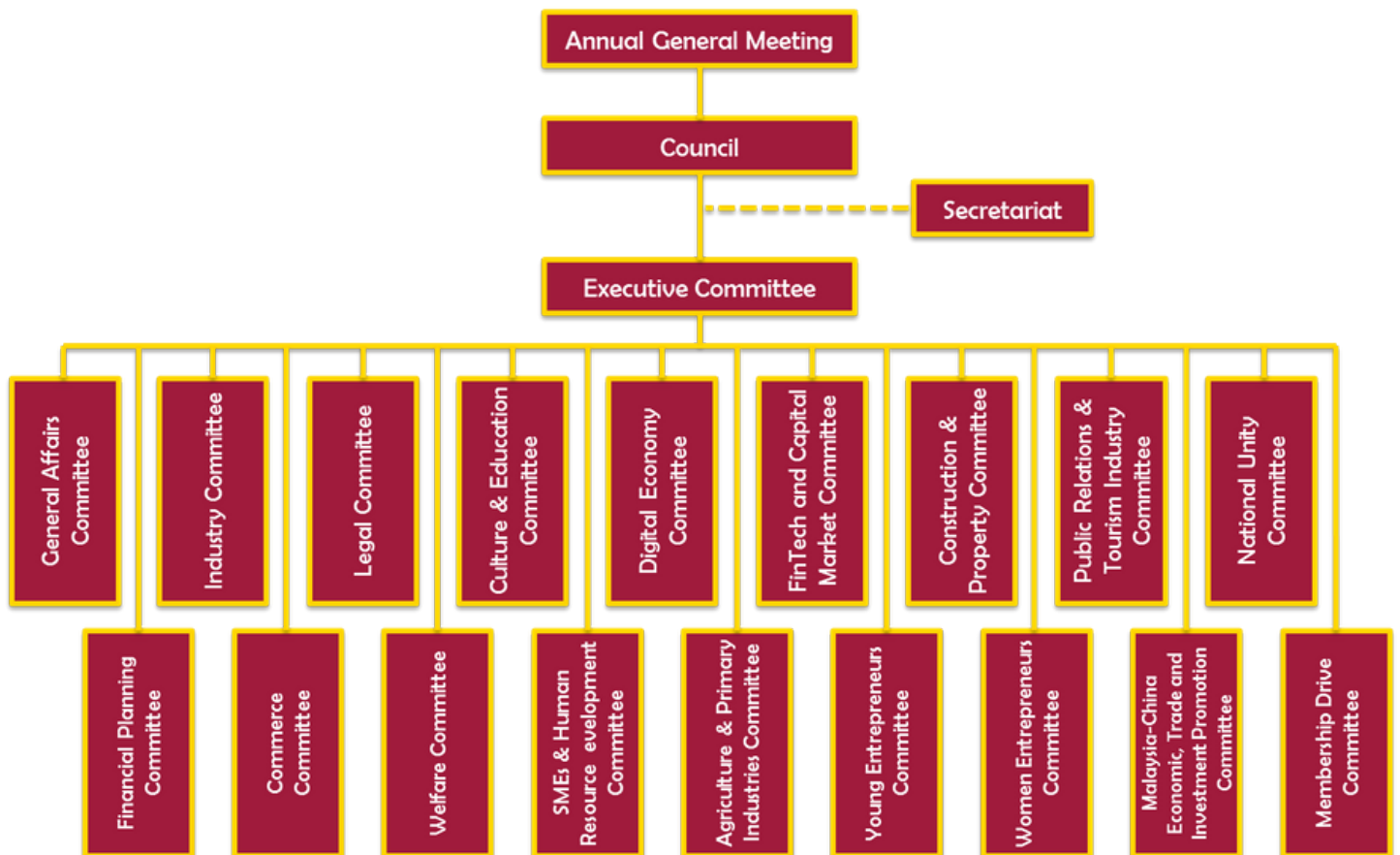
A General Meeting of members of the Chamber shall constitute the supreme authority of the Chamber. The Council which consists of 35 members elected from among the individual members, companies and firms, and 10 members elected from among trade associations, are formed to manage the affairs of the Chamber after the General Meeting. The Council may, if deemed necessary, appoint not more than 4 members as Council members.



组织图



ORGANIZATION STRUCTURE



KLSCCCI, 7th Floor, Wisma Chinese Chamber,
258, Jalan Ampang, 50450 Kuala Lumpur.

Tel: +603-4253 2135 Fax: +603-4253 2520

inquiry@chinesechamber.org.my www.chinesechamber.org.my

